

Pointing people to God

Inside this Issue

- Summer Adult Bible School 4
- Guns to Gardens Event 5
- Midvale's Graduating Seniors 6
- Trip with Border Servant Corps 8



Pointing people to God

by Pastor Katie Baardseth

"Here is the church, here is the steeple, open the doors and see all the people."

This phrase came to mind when I visited our family farmland in rural La Crosse this spring, pictured on the cover of this newsletter. My brother's cabin has a sweeping view of a coulee that is a part of the Black River Watershed. As I looked out, my eye rested on the white church steeple which crowns Hardies Creek Lutheran Church. The steeple anchors the whole view. How great to look out over this green valley full of natural beauty with a steeple pointing to the living God so present in all of it!

In terms of style and shape, steeples are as varied as the church buildings they highlight. But the meaning of the church steeple remains the same- to point people to God. In fact, that is the point of the church. From an architectural perspective, steeples orient us to a church building. From a faith perspective, the steeple orients us to God's presence everywhere-in our individual lives, here in our community, and within the world around us. The steeple is a good metaphor for our life of faith because it exists for one purpose- to point to Christ. Each of us is a steeple in our daily lives as we point people toward Jesus through loving, forgiving and serving. Think of people in your life who stand in your landscape like steeples- reflecting God's love and grace to you by their forgiving ways, acts of mercy and kindness, expression of care, and concern for your best welfare. Like church steeples, in terms of style and shape, we are varied too. But we all exist for one purpose- to point people to the love of God in Jesus Christ.

On your summer trips and right atop Midvale Community Lutheran Church, look for the steeples. When you see them, let them orient you to a church building. But also, let the steeple re-orient you to the main point of life- loving and serving Jesus by loving and serving others. May God bless the mission of the people of Midvale Community Lutheran Church: "Here is the church, here is the steeple, open the door of God's love for all people!"

Summer worship schedule

All worship is offered in person in the Sanctuary

- Saturday at 5:00pm
- Sunday at 8:00am (*also on Facebook Live*)
- Sunday at 10:00am - **Note summer time**

High school graduate recognition - June 4 at 10:00

Join us as we celebrate the accomplishments of our high school graduates and bless them as they mark this milestone and move into the next stage of their lives.

The Holy Trinity - June 3-4

Though the word trinity is not found in the scriptures, this weekend's reading from Corinthians includes the apostolic greeting that we share with each other at every worship: The grace of our Lord Jesus Christ, the love of God, and the communion of the Holy Spirit be with you all. In the gospel for this weekend, we read about how the risen Jesus sends his disciples forth to baptize in the name of the Father, and the Son, and the Holy Spirit (Matthew 28:16-20). More than a doctrine, the Trinity expresses the heart of our faith: we have experienced the God of creation made known in Jesus Christ and with us always through the Holy Spirit. We celebrate the mystery of the Holy Trinity in word and sacrament, as we profess the creed, and as we are sent into the world to bear witness to our faith.

PRAISE



Worship band playing for worship June 4 at 10am

Midvale's worship band will be providing music for the 10:00am worship on Sunday, June 4th. If you think you might like to try out being part of Midvale's worship band, either as a singer or instrumentalist, please contact Marita Herkert-Oakland at childrensministry@midvalelutheran.org for more information. All are welcome!

Seminarian Elise Uphoff to lead worship June 10-11



This weekend we welcome Midvale member Elise Uphoff, a student at Luther Seminary. Elise will preach and assist with worship.

New member welcome June 10-11

New members to the congregation will be welcomed in worship the weekend of June 10-11. If you are interested in becoming a member of Midvale, please let Pastor Katie or the church office know.

Blessing of prayer shawls - June 18

Join us on June 18 when prayer shawls will be blessed. The shawls are gifts given from the heart created with love and prayers by dedicated knitters and crocheters. They will be displayed in the sanctuary and in the Gathering Space. If you know of anyone who is ill or grieving, feeling isolated and alone or needs a warm hug during a difficult time, a shawl will be available for you to take to them.



The Prayer Shawl Ministry is a group of knitters and crocheters who want to share God's love and caring spirit. If you are interested, please join us on Prayer Shawl Tuesday which meets on the second Tuesday of the month at Midvale. We also create hats and scarfs for local schools and organizations.

Filling the summer months with music

Do you have any favorite hymns in the hymnal that you love to sing? Do you play an instrument and have music that could be offered during worship?

Whether a solo or part of a duet or small group, you're invited to share a song for special music over the summer months. You can choose whatever date and whichever worship time (Sat 5:00, Sun 8:00, Sun 10:00) works best for you. If you need an accompanist or you would like assistance in finding additional people to form a duet, quartet, etc., Laura Svaren will help. She can also help you find a piece of music if you're not sure what to sing/play. It need not be elaborate and you don't need to consider yourself a "musician." It can be as simple as a favorite hymn from our hymnal. Whatever you offer will enrich our worship experience and open our hearts to God.

Please contact Laura Svaren (lauras@midvalelutheran.org) as soon as possible if this is something you are considering. Details can be worked out later. Thank you!

Vacation Bible School - registration now open!

Vacation Bible School (VBS) this year is called Operation Restoration and it will be held from August 7th through 10th from 5:30 - 8:00 pm nightly. Join us for activities, games, food, music, and more as we explore how we can help mend our world! We have programming for 3K - 6th graders, youth leadership opportunities for 7th - 12th graders, and plenty of volunteer and fellowship opportunities for adults! All are welcome. Registration is open now through July 24th at midvalelutheran.org/vacation-bible-school.



Adult Bible School 2023

The Adult Education Committee at Midvale is glad to present an Adult Summer Bible School, our fourth summer now. Many discussions and reflections have resulted in this year's theme: Creativity.

Creativity is certainly a theological theme, especially as we think about creation stories, and the creative approach of Jesus to his own faith. And creativity is what generates much of our thought and conversation about God and the church in a changing world. It may be said that the times we live in actually require us to be creative and innovative as we navigate an ever changing future.

There are many creative people at Midvale as well, and some of them have volunteered their time for presentations which come out of their own creative lives and experience. Through the summer, we will be looking at creativity in scripture and theology, the creative work of artists in the congregation, and the work of many to help us become a creative congregation.

There are eleven sessions planned for the summer. The first ten are in the fellowship hall at Midvale. All but one are on Wednesday mornings, starting at 10:00am and ending around 11:45am with light refreshments. The final session is another of our morning retreats at Holy Wisdom, this one designed to help us pull together the eleven sessions and to reflect on how to be creative people. You can find a complete listing of the sessions and register to attend on our website, midvalelutheran.org/abs.

The sessions for the month of June are:

June 21, Wednesday, 10:00am - Creativity in the Hebrew Scriptures with Pastor Larry Pinnow

From Genesis through the Prophets, the Hebrew people of faith are inspired to give us testimony of a living, active God who accompanies us through life - just as God accompanied the Israelites. How does God accompany us? Inspire us? Come and hear the Old Testament as its stories inspire and create Faith within us. *Please register by Sunday, June 18.*

June 28, Wednesday, 10:00am - Creativity in the New Testament with Pastor Larry Pinnow

God continues to create a faithful people through a new covenant of relationship - a continuation of the Old covenant with the Hebrew people of the Old Testament. Come and hear God's spirit working through the followers of Jesus, creating a new community of faith and love. *Please register by Sunday, June 25.*

Please join us for the sessions. You can attend some or all of the sessions. Pre-registration is very helpful. And we have a limit this year of 20 for the retreat. Join us once again for thoughtful and inspiring mornings this summer. A brochure with the full summer schedule is available in the Gathering Space and on the website, under the "Grow" tab.

Midvale Bike/Walk to Church Day - Sunday, June 4



To celebrate the beginning of Wisconsin Bike Week, we invite you to bike or walk to church on Sunday, June 4! Why?

- Environmental: Bicycling and walking reduce our impact on the environment.
- Health and wellness: Healthy members lead to strong congregations.
- Fellowship and family-building: Families can bike/walk, building memories and community to worship.

There will be a short "blessing of the bikes" at the bicycle racks right after the 8am service and at 9:50 am, just before the 10am service. Look for cycling information and other resources available in the Gathering Space as well.

Help Feed our Dane County Neighbors – Support St. Mark's Food Pantry

Galatians 6:2 Carry one another's burdens, and in this way you will fulfill the law of Christ.

Hunger remains a daily problem for many Dane County residents. Among the most important ministries we at Midvale support is the St. Mark's Food Pantry located at St. Mark's Lutheran Church in south central Madison.

St. Mark's has informed us they are in need of donations to meet increasing community needs. Support can be given either through financial donations or nonperishable food items. A collection bin for food items is located in the Gallery at Midvale. From the entrance, go down the stairs or elevator and it will be immediately in front of you. Midvale's Men's Group regularly takes donated items left at the church to the food pantry. Members who wish to make a financial contribution can mail a check to:

St. Mark's Lutheran Church Food Pantry
605 Spruce St.
Madison, WI 53715

Please consider supporting this important ministry for less fortunate members of our community.

Additional information about St. Mark's Food Pantry can be found on their website: http://www.stmarksmadison.org/food_pantry.aspx

MIDVALE COMMUNITY LUTHERAN CHURCH IS A COMMUNITY OF BELIEVERS IN JESUS CHRIST, CALLED BY THE HOLY SPIRIT TO PRAISE, LIVE AND SHARE GOD'S LOVE.

LIVE

Midvale meditation group

Is it possible to experience JOY again in God's presence? When does that happen for you? For a dozen members of Midvale this happens every Thursday at 11am. We practice Contemplative Meditation. Meditation ushers us into God's presence- to listen again, to trust again, to love again. And so, Joy comes back into our lives, and to our everyday living, especially in hectic times. Our group meditates for 35-45 minutes. You are welcome to join us. Contact church office and they will direct you to our convener, David Braunschweig, who launches Zoom.

National gun violence awareness observed in June

As people of faith, we are saddened by the all-too-frequent occurrences of gun violence in this country. We mourn the loss of life. We grieve for the victims and their families, who often feel silenced. And we lament for those who have done violence to others and often feel removed from a community of faith. As Lutherans, our baptismal covenant calls us to strive for justice and peace in all the world. As a church, we look for ways to bring healing to those affected by violence as well as those unjustly caught up in the criminal justice system. The ELCA social message "Community Violence" urges us to become more involved in countering the reality and fear of violence in our communities and our neighbors' communities, pursuing justice and seeking peace no matter how long the journey or complex the challenge.

The message states: "Before God, we all are in captivity to sin, and in need of God's mercy. Some have committed acts of violence. Others have been sinned against through acts of violence. Still others are overwhelmed by fears of violence. In proclaiming the gospel of Jesus Christ's forgiveness, healing, and new life, the church addresses the ultimate root of violence. Through his death, Christ broke down the dividing walls of hostility, fear, and violence between people, reconciling us to God and one another (Ephesians 2:13-17). God's reign of peace has come in Jesus Christ, and will be complete in a 'new heaven and new earth' where death and pain 'will be no more' (Revelation 21:1,4)."

June 10: Guns to garden tools gun surrender event

June 10-11: Worship will include a litany of lament for gun violence



Guns to Gardens

Guns to Gardens: Safe surrender events - June 3&10

We are joining with churches across the country to dismantle unwanted firearms. We believe as a Church, we can affirm Isaiah's call to beat our swords into plowshares and end gun violence. Many people are in possession of unwanted firearms and have no trusted place to discard them without turning them back out into the market. Dismantling your unwanted gun is the only way you can be sure your gun will not be used for harm.

Two Madison churches are hosting safe surrender events through the Guns to Gardens program.

Bring your unloaded firearm(s) stored in the trunk of your vehicle to:

- First United Methodist Church
Sat, June 3, 9am – noon
- Midvale Community Lutheran Church, Sat, June 10, 9am – noon

A volunteer will remove weapons for dismantling. Raw materials are sent to RAWtools to be made into tools. Learn more here and please help spread the word.

Would you like to take part in Guns to Gardens Safe Surrender at Midvale on June 10? Your participation does not require handling firearms as there are a number of ways of serving. Please contact Jeff Wild at jtwildwi@gmail.com if you have questions and are interested in serving individuals from the community who want to safely surrender their firearm(s).

The Lord's Creation

by Dylan Abraham
Originally printed in *The Moments*, May 12, 1996.

*Spring is here,
A new sensation,
It's all a part of,
The Lord's creation.
Flowers in bloom,
Birds in flight,
Clear blue waters,
It's quite a sight.
Easter has come,
And gone as well,
He died on the cross,
To escape the hell.
The sun is setting,
A golden ball,
The Lord's creation,
Is for us all.*

2023 High School seniors

Gus Arnold

High School Attended: Madison West High School

School You Will Attend After Graduation: Colorado State University

Intended Major: Political Science

Interests and hobbies: Music, travel, & enjoying the outdoors

How I have served my church, school, and/or community: Worship acolyte, served meals at the Porchlight Shelter. At school, I've been involved in restorative justice, and I have also done political canvassing.



Camille Cole

High School Attended: Oregon High School

School You Will Attend After Graduation: Drake University

Intended Major: Elementary Education

Interests and hobbies: Rowing, skiing

How I have served my church, school, and/or community: Sunday School & VBS helper, Second Harvest, went to Toledo in 2019 for the Service Learning Trip.



Madeline Dean

High School Attended: Madison West High School

School You Will Attend After Graduation: Smith College

Intended Major: Physics

Interests and hobbies: West High School Rocket Club, hiking in national parks, reading fantasy novels, playing the violin

How I have served my church, school, and/or community: Rocket Club outreach to local elementary and middle schools



Kaden Frey

High School Attended: Vel Phillips Memorial High School

School You Will Attend After Graduation: University of Wisconsin - Madison

Intended Major: Mathematics

Interests and hobbies: Tennis, robotics club, mathematics, hanging with friends, video games

How I have served my church, school, and/or community: Volunteering at Second Harvest, VBS, LWR school kits, robotics club mentoring



Jack Larson

High School Attended: Madison West High School

School You Will Attend After Graduation: University of Minnesota - Twin Cities

Intended Major: Chemical Engineering

Interests and hobbies: Spending time outside with friends.

Ultimate Frisbee at Madison West, MUFA, and YCC teams, National Honor Society, Philosophy Club and Key Club. On the Global Scholars Track. Active in Regent Club and West soccer.

How I have served my church, school, and/or community: Worked with Midvale on preparing and serving food at Porchlight multiple times as well as helped with Second Harvest. Worked at the food pantry in Verona multiple times with family, and assisted with kid cooking classes. Worked with Luv Michael which is a non profit that helps employ adults with autism, raised \$250 in their fundraiser. Worked as an intern in a local digital lock company and at Pizza Brutta.



Margaret "Maggie" Matthews

High School Attended: Madison West High School

School You Will Attend After Graduation: Iowa State University

Intended Major: Mechanical Engineering

Interests and hobbies: Baking, reading, playing rugby

How I have served my church, school, and/or community: Sunday School, VBS, Second Harvest Food Bank



SHARE

James Nordeng

High School Attended: Madison West High School

School You Will Attend After Graduation: University of Wisconsin - Eau Claire

Intended Major: Psychology

Interests and hobbies: Music, fantasy, tabletop games, and dogs in general but specifically my own

How I have served my church, school, and/or community: Participated in Service Learning Trip to Toledo, worked with Second Harvest food bank. Last year I was a counselor-in-training at Camp Woodebrooke and served as a leadership intern with Camp Invention.



Ben Runzheimer

High School Attended: Madison West High School

School You Will Attend After Graduation: University of Wisconsin - Madison

Intended Major: Art and Biology

Interests and hobbies: Swimming, art, and being outdoors



Celebrating Al Bendsten

Midvale member Al Bendsten has contributed to Midvale using his talents as a woodworker in many ways. We celebrate and thank Al for all his gifts to Midvale over the many years. We will recognize Al's contributions to Midvale on June 11.

Al's first experiences in woodworking came in 6th grade as class projects where he fashioned corner shelves and play furniture. Other projects followed and in 1958 Al chose to study wood in college at the University of Minnesota. He received his Bachelor's and Master's degrees in 1961, and then went on to have a career at the UW Forest Products Lab as a research scientist in the properties of wood.

Al took on the task of finishing the inside of the house that he and his wife Carole had built in 1963.

He had no formal training, but learned by observation and by doing. In addition to learning how to finish a house and design build-ins, Al started to make furniture. Mostly he does not work from a plan – he just envisions and designs in his head and the projects evolve as he goes along. He often does not know what an end project will look like when he begins.

Some of Al's earliest work for Midvale was in the nursery, where he designed a unique magazine rack and wonderful storage cabinets and counter. His work was an integral part of the 2010 sanctuary remodeling, where he crafted six candlesticks from architect Paul Barribeau's design.

During the early years in the new sanctuary, Al made many cherry boxes in a variety of sizes to be used as stands for flowers, as well as other adornments on the altar area. He also created oak tables that are used to hold a variety of things in worship from baskets for used worship folders or communion cups to music books for the pianist.

The welcome table in the gathering space was Al's first big furniture or stand-alone piece for Midvale. It was a challenge to work out the design as he used the altar table as the model and he spent many hours working it out in his head. (Including, he admits, during more than a few sermons). The beautifully crafted welcome table is made of cherry. Using and enhancing the same design elements from the altar table, Al subsequently fashioned a stand for the St. John's Bible volumes and two kneeling benches used both as individual prayer stations and in congregational services for confirmation, wedding and ashes imposition.

The Gathering space clock is one of the pieces Al enjoyed building the most. When a member wanted to contribute a new clock for the area, the request, with a proposed commercial piece, was sent to the AWE committee for acceptance. The committee asked for permission to hire Al to make a clock. After considerable study, Al came up with a design that again uses elements from the altar table and other pieces he has made.

From a young man with borrowed tools and an unfinished house to a skilled woodworker with a shop full of tools, Al Bentsen has left an astounding legacy of craftsmanship in wood. Midvale has been the grateful recipient of many wonderful pieces of his work found throughout our building!

Trip with Border Servant Corps - January 18-23, 2024



In January 2023, Pastor Katie traveled to El Paso, Texas and Las Cruces, New Mexico to participate in Border Servant Corps. This ministry was begun in 1997 by Dot Quaintance, a member of Peace Lutheran Church in Las Cruces, New Mexico. The mission of Dot and her congregation was to serve the border region of El Paso, Texas and Ciudad Juarez, Mexico. "Together we do justice, love kindness, and walk humbly in the US/Mexico borderlands by hosting groups interested in accompaniment style immersion, where relationships and firsthand educational experiences about border issues are prioritized; creating opportunities for learning and service." -Border Servant Corps

Pastor Katie invites you to join her for Border Servant Corps in January 2024. Save the dates- Thursday January 18 to Tuesday January 23. Please consider joining her for this experience where you can travel, learn and serve those at the US border. "Seeing the borderlands for myself, learning and serving with other people, being immersed in New Mexico and Texas' natural beauty and culture has shaped my view of what it means to follow Jesus in the dynamic world around us."

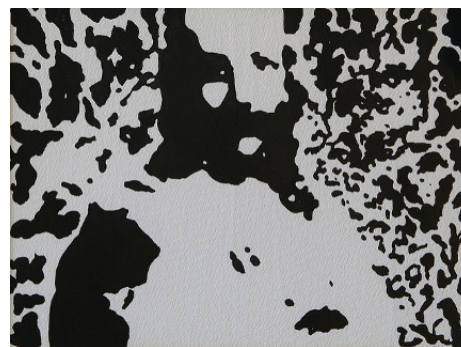
New art exhibit: Jesus Images of Change

Travel through Midvale's art collection in this new exhibit celebrating Midvale's 70th Anniversary. Our collection includes many images of Jesus, some familiar and others less well known but they represent how time has shown us different interpretations of Jesus. Each section of the exhibit has a time frame regarding the works included. As you walk through the Gathering Space, Main Hall and downstairs to the Fellowship Hall please think about the posted comments and questions that will help you appreciate this exhibit. The exhibit will continue on display through early August 2023.

This exhibit focuses on four different periods of art starting with our oldest Jesus prints beginning with a work from El Greco, 1580. The other works are all from the 1800s through the early 1900s. The Warner Sallman work was the most popular image of Jesus beginning in the 1940s. The second period is the 1950's through the 1970s. JESUS IN THE SNOW is a unique photo that was popular during the 60's-70's. The third period is the 1980s through today and begins to show variations and a broadening of the visual ideas about Jesus. Finally, we highlight our six works purchased in 2021. These works represent the viewpoints from Black, Indigenous, People of Color (BIPOC) and include: Dr. James He Qi -Chinese; Solomon Raj-Indian; and Cecil L. Reed, Jr. -Black. This collection continues to help us see Jesus through the eyes and perspectives of these artists.



Head of Christ, American, Warner Sallman, 1941



Jesus in the Snow, Chinese, 1960s



Son of God, American, Cecil Reed, 2021

Red Cross blood drive at Midvale June 22

The West High School National Honor Society is coordinating a blood drive at Midvale in the Fellowship Hall on Thursday, June 22 from 12pm - 5pm. Drop ins are welcome, but making an appointment is preferred. To make an appointment, go to redcrossblood.org and enter the code "westhighschool" or use the QR code. All presenting donors will be entered into a raffle for a chance to win a Summer Fun Grill Package.



In our prayers remember:

† Hospitality as we welcome friends, visitors and guests.

† Health, comfort and healing for: Bill Weiss (father of Becki Fiegel), Richard LaBrie, Jeff Leeder (brother of Randi Leeder), Tonya Pankov (friend of Karen Bogenschneider), Diane Baima and Yurii Potapenko, Nola Allen, Greg Lampe, Vitaliy Bykov (husband of Snizhana Bykova), Julie Underwood (daughter of Linda Crane), Adrian Gutierrez (grandson of Bob & Carol Ostergren), Lois Ludwig (friend of Neal Hamlett), Toni Combs (friend of Neal Hamlett), Bill Sanquist (friend of Charles Naeseth), Daniel Johansson (nephew of Bianca Tomasini-Johansson and Mats Johansson), Chris Hill, Samantha Kealey (cousin of Elise Uphoff), Cynthia Erdal (aunt of Amy Bishell), Connie Brunner (sister of Barbara Summ), Richard and Adelle Johnson, Doug James (brother of Eric James and Gary Hein), , Cleo Loftsgordon, Toni Swandby, and Acadia Bradley (friend of Enid and Frank Erdman).

† For the safety and well-being of all who serve our community and nation as first responders, healthcare workers and military personnel, giving thanks for their dedication and courage.

Midvale Community Lutheran Church

4329 Tokay Boulevard, Madison, WI 53711

Telephone608-238-7119

Email info@midvalelutheran.org

Website midvalelutheran.org

Office Hours M-Th 8:30am-3:00pm

F 8:30am-12:30pm

Midvale Staff

Co-Pastor, Katie Baardseth: katieb@midvalelutheran.org

Co-Pastor, Blake Rohrer: blaker@midvalelutheran.org

Visitation Pastor, Ken Smith: kens@midvalelutheran.org

Director of Children's, Youth & Family Ministry, Brenda Goble: brendag@midvalelutheran.org

Office Manager, Pam Frey: info@midvalelutheran.org

Business Manager/Bookkeeper, Amanda Mueller: bookkeeper@midvalelutheran.org

Connections Coordinator, Laura Svaren: lauras@midvalelutheran.org

Director of Music Ministry, Laura Svaren: lauras@midvalelutheran.org

Handbell Choir Director, Eleanor Mertenich: handbells@midvalelutheran.org

Children's Ministry Assistant, Marita Herkert-Oakland: childrensministry@midvalelutheran.org

Facilities Manager, Jay Wians: facilities@midvalelutheran.org

Communications Manager, Justina Lange: communications@midvalelutheran.org

June Baptism Birthdays

Congratulations to our young people and their families as they celebrate the day on which God said to them, "I love you. You are mine!"



6/2	† Kinsely Webb	6/16	† Perrin Chodara
6/5	† Oscar Wells	6/20	† Connor Peery
6/8	† Sophia Harrison	6/23	† Eleanor Kruse
6/13	† Greta Lorenz	6/26	† Colin Fiegel
6/14	† Sonja Bodden	6/26	† Roni Fiegel

Memorials

Ardis Erickson

Sandy Kampen
Karen Mandt
Bob and Jane Smith
Nancy Abraham
Anne Wuethrich
June Lange
Sharon Kampen

Virgil Jurens

Pat Roth
Bob and Ruth Hollenbeck

Sharon Mitchell

Sharon Kampen
Anne Wuethrich
Karen Mandt

Helen Gentilli

Jerry and Ruth Apps
George and Ann Kroncke
MaryIn Grimm
Nancy Wiebe
Nancy Abraham

Wilma Rohweder

Jerry and Ruth Apps

Marion Thoresen

Sharon Kampen

Congregational Council

You can contact Church Council members directly through your online Midvale Realm account or or by contacting the church office.

President, Julie Walsh

Vice-President/President-Elect, Gene Nelson

Treasurer, Derek Matzke

Secretary, Bree McGrath

Adult Education, Emily Gnam

Building and Grounds, Hans Borcherding

Social Ministry, Ben Kempinen

Evangelism and Communications, Laurie Stensland

Congregational Life, Liz Mael and Corinna Wells

Children/Youth Education, Kayla Snell & Stefany Grainger

Stewardship, Amy Bishell

Worship, Kay Bloedorn

Youth and Family Ministry, Paul Block

prayer chain

*If you have a prayer request, please call
Mary Lou Leslie, 849-6450.*

THIS MONTH AT MIDVALE - JUNE 2023

Sunday	Monday	Tuesday	Wednesday	Thursday	Friday	Saturday
				1	2	3
<p>This schedule is tentative. For the most current schedule, visit midvalelutheran.org, select the News tab.</p>				MSCR Yoga 9am MSCR Yoga 10:15am Midvale Meditation 11am MSCR Yoga Online 4pm Johnson-Becklin/Hetico Wedding Rehearsal 4:30pm	AI Anon 11th Step 11am Johnson-Becklin/Hetico Wedding 2pm	Youth-led Worship Homebound Communion Handbell Choir Event 10:30am Worship 5pm
Youth-led Worship Homebound Communion Walk/Bike to Church Day Worship 8 & 10am Worship Livestream 8am Blessing of Bicycles 8:50 & 9:45am Hospitality Time 9am Recognition of High School Graduates 10am	Scouts 7pm Adult Ed Comm. 7pm	LWR Quilters MSCR Yoga 9am Staff Meeting 10am MSCR Yoga 10:15am Madison Ukulele 6:30pm Diligent Doers 6:30pm Brass Ensemble 7pm	Audit Committee 8:30am Archives 9am Care Team 9am AA High Noon 12pm	MSCR Yoga 9am MSCR Yoga 10:15am Midvale Meditation 11am MSCR Yoga Online 4pm	AI Anon 11th Step 11am	Monthly Community Deadline Safe Surrender of Firearms Event 9am Worship 5pm
4	5	6	7	8	9	10
11	12	13	14	15	16	17
New Members Welcome Recognition of AI Bendsten Worship 8 & 10am Worship Livestream 8am Hospitality time 9am	Midvale Youth at Second Harvest 12:15pm Executive Comm. 5:45pm Building/Grounds Comm. 7pm Social Ministry Comm. 7pm Scouts 7pm	Staff Meeting 10am Prayer Shawl Group 10am Madison Ukulele 5:30pm Brass Ensemble 7pm	Archives 9am AA High Noon 12pm	Midvale Meditation 11am Mitchell Memorial Service 11am	AI Anon 11th Step 11am	Worship 5pm
18	19	20	21	22	23	24
Father's Day Blessing of Prayer Shawls Worship 8 & 10am Worship Livestream 8am Hospitality Time 9am	VBS Music Rehearsal & Work Night 6pm Energy Task Force 6pm Worship Comm. 6pm Congregational Council 7pm Scouts 7pm	LWR Quilters 9am Staff Meeting 10am Madison Ukulele 6:30pm	Archives 9am Adult Bible School 10am Midvale Men's Group Lunch 11:30am AA High Noon 12pm Madison Ukulele 6:30pm	Midvale Meditation 11am West High Blood Drive 12pm	Midvale Youth Service Learning Trip to Denver AI Anon 11th Step 11am Midvale Mallards 6pm	Worship 5pm
25	26	27	28	29	30	
Midvale Youth Service Learning Trip to Denver						
Worship 8 & 10am Worship Livestream 8am Just Bakery 8:30am Hospitality Time 9am	Worship Band Jam Session 6:30pm Scouts 7pm	Library Committee 9am Staff Meeting 10am Madison Ukulele 6:30pm	Archives 9am Adult Bible School 10am AA High Noon 12pm 10	Midvale Meditation 11am	AI Anon 11th Step 11am	

MIDVALE COMMUNITY LUTHERAN CHURCH
4329 TOKAY BOULEVARD . MADISON . WI 53711

Dated Material

all are welcome!

Summer worship schedule

Saturday at 5:00pm

Sunday at 8:00am (also on
Facebook Live)

Sunday at 10:00am



**Evangelical Lutheran
Church in America**
God's work. Our hands.



NON-PROFIT ORG.
U.S. POSTAGE
PAID
Madison, WI
Permit No. 800



2023 VBS

SAVE THE DATE!

**MONDAY, AUGUST 7TH -
THURSDAY, AUGUST 10TH**

5:30 - 8:00 PM

**REGISTRATION IS OPEN UNTIL
JULY 24TH!**