

Why Wait?



Inside this Issue

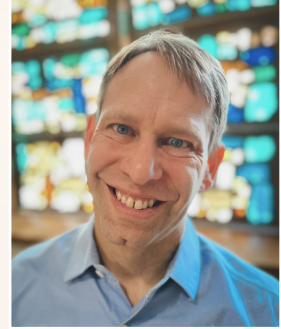
Christmas Worship Schedule 3

Special Christmas Music 3

Advent Devotionals 4

MMSD Christmas Project 7

Why wait?



by Pastor Blake Rohrer

I was getting milk the other day at the grocery store, and I heard some of my favorite Christmas carols on the sound system. It really lifted my spirit!

Advent is the time of year when we are more likely than any other time to hear church songs in non-churchy places; to hear sacred songs in secular places; to hear songs about God in places that might not have much to do with our faith. Have you noticed where you hear Christmas songs throughout the week? On the radio? At the grocery store? On a TV commercial?

When Jesus came into the world as a baby, all of a sudden God was right here with us! God wasn't just inside the Temple, or somewhere up in heaven; God had come to walk right alongside God's people. Throughout this Advent season I invite you to notice where God shows up in unexpected places - maybe even through song! God is all around us, and we are invited to welcome and notice signs of God's presence.

Much of our society is leaning toward Jesus and the manger this month, whether they realize it or not. And it's not just Christmas music either. At this time of year people really do strive to be kinder, more patient, more generous. Traditionally Advent tells us to wait, but Mark's gospel has no time for waiting. Everything happens "immediately," one of the most used words in Mark. So why should we wait? What would it look like to live Advent in the present tense? With the idea that the good news of Jesus is happening now? How can we invite others to experience the good news God is already bringing into the world and our lives?

The other reading for the first weekend of December is from the prophet Isaiah (Isaiah 64:1-9). Isaiah wishes God would just open the heavens and come down, Isaiah is speaking to God's people who are alienated, confused and feeling abandoned. Isaiah cries out to God "Tear open the heavens and come." What kinds of times and occasions make you wish that God would just show up, here and now? Times of happiness and joy? Times of heartbreak and injustice? What situations make you wish God would just open the heavens and come down?

Why wait? Come now, Lord Jesus. Help us see you in our lives now. Help us bring your good news to the many, including ourselves, who so need to experience it.

PRAISE

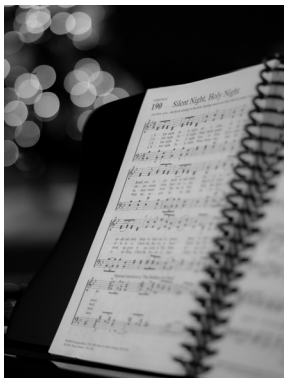
Worship schedule

All worship is offered in-person in the Sanctuary

- Saturday at 5:00pm
- Sunday at 8:00am (also on Facebook Live)
- Sunday at 10:30am
- Sunday School and Adult Education at 9:15am
- See the Christmas worship schedule for Sunday, December 24 and Monday, December 25
- Note - there is no worship on Saturday, December 23

"Christmas Chronicles" Children's Christmas program Saturday, December 9 at 5pm

This year's Christmas Program will be shared during our Saturday worship. The first act is written by our Sunday School children and the second act is a retelling of the Biblical Christmas story. A reception will follow. It is one of the most meaningful events of the season, hearing our children sing and share the good news of Jesus' birth. All are invited!



"A Community Christmas Music Celebration" Sunday, December 17 between services

Midvale musicians will present a concert of Christmas music during the Education Hour (9:15-10:15am) on Sunday, December 17th, in the sanctuary. Featured will be Midvale's Adult Choir, Handbell Choir, and Brass Ensemble. Also sharing music will be Nancy Linder (piano), Michael Keller (piano, organ), Tyrone Greive (violin), Karen Kretschmann (voice), Becca Burnett (flute), Cindy Cameron (recorder), and Dale Fix (guitar). Come and share the joy of the Christmas season as expressed through old familiar carols and music from other times and places!

Christmas worship schedule

Christmas Eve Worship, December 24 at 10:00am, 3:00pm, 4:30, and 7:00pm

Each worship time will feature the Christmas gospel, your favorite Christmas hymns, a children's message and a sermon helping us see how the birth of Christ gives light and hope to us today. Holy Communion will be offered at all worship times.

Experience the peace of Christmas as we sing "Silent Night" by candlelight at the conclusion of the 3:00, 4:30 and 7:00pm worship times.

Harpist Suraya Gade will provide melodious music and accompaniment for the 4:30 and 7:00pm worship times.

Christmas Day Worship, December 25 at 10:00am

Celebrate the wonder of Christmas morning with festive worship and singing of carols.

Facebook Live Christmas Worship, Christmas Eve at 4:30pm and Christmas Day at 10:00am.

These worship times will also be recorded, so you can participate live or watch the worship recording anytime afterwards on the church Facebook page.

December 30 and 31 - regular worship schedule
Saturday at 5:00pm and Sunday at 8:00 and 10:30 am

***Note - there is no Saturday worship on December 23.**

December 10 worship hike at Odana Hills Golf Course

Gather from 10:30-10:45am in the parking lot by the evergreen trees. Share in prayer and Holy Communion. All ages welcome. Dress for the weather. Regular worship will be offered in the Sanctuary at 10:30am.



Deck the halls December 2 at 9:00am

You are invited to come and help decorate our worship space for the Advent/Christmas season! We'll gather at church on Saturday, December 2 at 9:00am. We expect this to take about 2 hours, but come for as little or as much as you can. Members of the AWE committee will be there to give instructions. We especially need volunteers who are comfortable climbing ladders and carrying bins full of decorations.

Past participants have said what a fun and joyful experience it is to be a part of! If you have any questions please contact Suzy Tegge (suzymail@charter.net) or Nan Wild (njkwild@yahoo.com).

Advent Zoom Bible Study - Wednesdays, November 29, December 6 and 13 at 10:00am

Share conversation and discuss the Advent themes with Pastor Blake. We will look at the Bible readings for the upcoming week-end. Each session will be 30-45 minutes. See "The Moments" weekly email or contact the church office for the Zoom connection information.

Advent 2023 - Why Wait? Meeting Jesus right now

The Season of Advent marks the beginning of the Church Year. Traditionally, Advent is the four Sundays before Christmas where we wait for the coming of Christ. Advent is not a part of the Christmas season but rather it is a time that we prepare our hearts for the coming of Jesus. In fact, the word "Advent" comes from the Latin word *adventus* which means coming. Advent is a time to prepare our hearts in two ways. One is for the coming of Jesus the Messiah, born at Christmas, the arrival that happened over 2000 years ago. The other is for the coming of Jesus in the future, to bring to completion God's hopes for the reconciliation and renewal of all. Therefore Advent is described as a season of waiting.

However, this Advent at Midvale, we are asking, "why wait?" What would it look like if we leaned into the "already" of Jesus here with us?

Each week in December we will focus on a different theme that helps us explore this question, "Why wait?"

- December 2-3 - Come now.
- December 9-10 - Comfort now.
- December 16-17 - Peace now.

Video Devotionals each week

On the Monday after the weekend you will receive by email a video for you to use in an at-home devotional practice during the week. The videos are about five minutes long, but they will give you an enduring experience of connection to God and the presence of Jesus. You experience the video devotion on your own or with whoever is in your household. Find a quiet spot, at home, at work, or even in your car, and where you can set aside a few minutes and give it a try. You can easily watch the video on a phone, tablet or computer.

The video devotionals are led by the Rev. Jenny Sung, an ordained #FreeRangePastor with the Evangelical Lutheran Church of America. She has been preaching, writing, and curating spaces worldwide for healing through brave love and community art. Rev. Sung's passion for art comes from her many years as a professional modern dancer. You may remember her from one of last year's Lent Bible studies, she was the featured presenter on the video for Hagar in Genesis 16.

Midvale's Worship Band - Special Advent Worship Sunday, December 3 at 10:30am

The band is bringing together familiar songs with new arrangements (think guitars and percussion) and new contemporary and praise music to our worship time. Just like this time of waiting for Jesus feels both new and familiar every year, so does this musical journey. Listen for themes of joy and waiting, and enjoy singing along to some new music as well as familiar music with new accompaniment!



The Rev. Jenny Sung

MIDVALE COMMUNITY LUTHERAN CHURCH IS A COMMUNITY OF BELIEVERS IN JESUS CHRIST, CALLED BY THE HOLY SPIRIT TO PRAISE, LIVE AND SHARE GOD'S LOVE.

LIVE

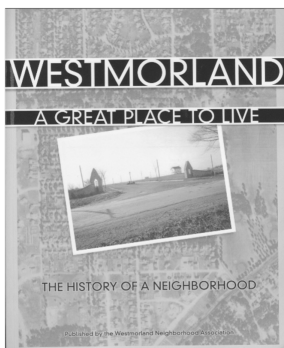
Adult Education Sundays at 9:15am -Join us in the Fellowship Hall or on Zoom



December 3 – "Sustainability Campus" is Coming Soon, and Other Updates from the Dane County Department of Waste and Renewables, with Sujata Gautam, Sustainability Engagement Coordinator

With less than 10 years of landfill space remaining at Dane County's Rodefild Landfill, our community has an opportunity to plan for our changing waste stream and purposefully set the foundation to advance us towards a circular economy. Our vision for the next site includes development of a sustainable business park or "Sustainability Campus" to divert waste and create local circular economies. This will be accomplished by attracting reuse, repair, and recycling businesses, new waste management technologies, and research. The intent is to design the site for safe public access, education, and recreation where visitors can examine their relationship with waste and the Dane County community can move towards a future where waste is not a liability, but a resource and an opportunity. Join us at Adult Forum to hear more about the new sustainability campus and other ways we are managing and reducing our waste as part of Midvale's focus on Care for Creation.

Sujata Gautam is the Sustainability Engagement Coordinator for the Dane County Department of Wastes and Renewables. She has a Civil Engineering degree from the University of Houston and a master's degree in Social Innovation and Sustainability Leadership from Edgewood College. She has a lifelong passion for recycling and thinking about what people do with things after we're done with them.



December 10 – The History of the Westmorland Neighborhood with Tom Martinelli

Our church sits near the southwest corner of the Westmoreland Neighborhood. It is part of the community we serve and we are part of the neighborhood's vibrant history.

The Westmorland Neighborhood Association was formed in 1941. To commemorate the 70th anniversary of the neighborhood association in 2011, a book was produced on the history of the neighborhood. Copies of the book entitled *Westmorland: A Great Place to Live* are still available at the Sequoya Branch Library. Neighborhood historian Tom Martinelli's presentation on December 10th will be based on the Westmorland history book.

Born and raised in Madison, Martinelli has written two family history books and a book on the history of the Madison Edgewood football program, and he has been involved with the publishing of four neighborhood history books for the Westmorland neighborhood in Madison where he has lived for over forty years.



December 17 – A Community Christmas Music Celebration with Midvale Community Musicians

Experience the joy and anticipation of the Advent season by joining members of our church community in a celebration of music during the Sunday School hour. We are so blessed to have talented musicians and engaged musical groups as part of our Midvale community. This year's concert will highlight those groups and musicians as they fill the Sanctuary with the music of Christmas.

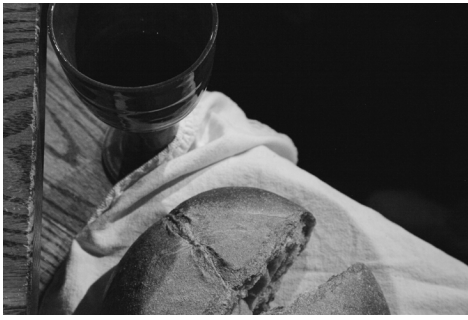
December 24 – Christmas Eve – No Forum

December 31 – New Years Eve – No Forum

Zoom link - You do not need to register to attend the Adult Forum. Reference our weekly newsletter, The Moments, for the Zoom link or contact the church office. The same link will be used for all sessions.

Feedback Welcome!

The Adult Education Committee welcomes all thoughts, feedback and ideas for future Adult Forum programming. If you have thoughts to share, please email adulthood@midvalelutheran.org or reach out to a Committee member directly.



Holy Communion and First Communion Workshop

All third graders, and children who are older who have not yet participated in this workshop, along with a parent or guardian, are invited to attend a time of interactive instruction in the meaning and spirituality of Holy Communion. The workshop will be Saturday, January 6 at 2:30pm, with recognition in worship on either Saturday, January 6 or Sunday, January 7. Please reply by Tuesday, December 19 to the church office.



Christmas Music and Flowers

If you would like to contribute to the wonderful music and beautiful flowers during the Advent and Christmas seasons, there are envelopes on the table in the Gathering Space and in the seatback holders of the pews. You can donate in memory of or in honor of someone special. All contributions received by Sunday, December 17th will be included in a special section of the Christmas Eve and Christmas Day worship folders.

You can also mail a contribution with a check payable to Midvale with "Christmas Music and Flowers" noted on the memo line, or give online selecting the giving fund "Christmas Music and Flowers." If you give online, please contact the church office with the wording of your dedication or fill out the form on the worship page of the church website.

These donations are used for special musicians during Advent and for our harpist on Christmas Eve, as well as the seasonal flowers and decorations for our worship space. Your contributions are greatly appreciated!

Olive wood carvings and olive oil from the Holy Land for sale

Olive wood ornaments, figurines, manger scenes, olive oil, and other items that would make great Christmas gifts will be available for sale at church through December 17. The carved items were all crafted in the Holy Land from native olive wood.

Proceeds from the sale will go to the Lutheran ministries in Palestine. This includes the Lutheran World Federation's Augusta Victoria Hospital in East Jerusalem and the churches, schools and well-being and therapy ministries of the Evangelical Lutheran Church in Jordan and the Holy Land.

The crisis in the region has created deep needs. Our support can help! You can also donate directly by making a check out to Midvale with "Middle East crisis" on the memo line or donating online on the church website by clicking the GIVE NOW button and selecting the ELCA disaster response fund from the drop down menu.

Gathering in Growth and Grace - 2024 financial commitments

Thank you to all who have already returned their 2024 pledge forms. Your response is an offering of thanks to God! With your support we can confidently move ahead in the next year and further our ministry as we serve our church and community.

If you have not yet returned your 2024 commitment, please do so as soon as you are able. If you need a new form or would like to begin automatic withdrawal, please contact the church business manager, Amanda Mueller at bookkeeper@midvalelutheran.org or 608-238-7119.

Thank you!

It's Christmas Time by Dylan Abraham

*It's Christmas time
Jesus was born in a manger,
To help mankind
and not be a stranger.*

*The baby Jesus
In his mother's arms,
To save us from sin
And keep us from harm.*

*The star above
Showed the way,
For the Wise Men
Who came from far away.*

*God's only Son
Would grow into a man,
Living His life
As only He can.*

*So, remember this Christmas
So full of love,
His father reigns
From high above.*

SHARE



MMSD Christmas Project

Midvale Community Lutheran Church, through the Youth & Family Committee, has partnered with the Transitional Education coordinator with the Madison Metro School District to help bring holiday cheer to families in need.

We have 60 individuals represented in twelve households. Imagine how special these gifts will be for those who receive them. Midvale families who have helped in the past have shared how it was one of the most meaningful ways they could honor the gift of Jesus at Christmastime.

All donations must be received by Sunday, December 3 at 11:30 a.m.

Whenever possible **PLEASE INCLUDE GIFT RECEIPTS!** The drop off bin is located in the church office and available during office hours or before or after worship.

There are 3 separate SignUp Genius links, which you can find in *The Moments* e-newsletter:

1) Individual Family Gifts.

We want to make sure each individual member of the family receives something just for them. Families filled out "wish lists" of their most needed and wanted items. The expected price range for these gifts is about \$50-\$100 per person which may consist of clothing, toys, and/or gift cards. When dropping off item(s), please identify by the family letter and member number, for example label "A-1".

2) Family or Household Needs

Each family will receive a Personal Care Kit (oral, hair & body care), a Paper Products Package (tp, paper towel, and tissue), and a Cleaning Supply Care Kit. You can donate one or two items or you can donate an entire care kit. This is also where you can contribute to winter items like hats, gloves, and tie blankets. Finally we need supplies for wrapping gifts that can be found on this list too.

3) Serving Opportunities

Offer your time to sort donations, shop, wrap gifts, or help deliver the packages.

Another way to help: Contribute Financially

Finally, if you don't want to do the shopping but are willing to contribute financially, visit midvalelutheran.org, select Give Now and choose "MMSD Christmas Project." We will use donations to purchase needed items or gift cards!

If you have any questions, reach out to Brenda Goble; brendag@midvalelutheran.org or 608-238-7119.

IRA Qualified Charitable Distributions

Donors over 70½ can make Qualified Charitable Distribution from an Individual Retirement Account (IRA). Donating from an IRA, given directly to Midvale Community Lutheran Church, may reduce your taxable income while satisfying your Required Minimum Distribution. Contact the business manager, Amanda Mueller, at bookkeeper@midvalelutheran.org or 608-238-7119 if you need assistance.

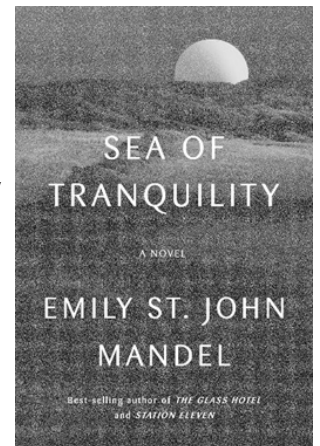
Midvale Readers Book Club

The Midvale Readers Book Club meets monthly for a lively book discussion. We read a variety of genres, including both fiction and non-fiction.

Join us on Tuesday, December 5, 2023 at 7pm on Zoom for a discussion of *Sea of Tranquility*, by Emily St. John Mandel.

Sea of Tranquility is a novel of art, time travel, love, and plague that takes the reader from Vancouver Island in 1912 to a dark colony on the moon five hundred years later, unfurling a story of humanity across centuries and space.

Contact Chris for the Zoom information to connect to the meeting at (608) 852-6749 (voice and text) or Chrisann45@charter.net





2023 End of year donations, stock gifts and 2024 commitment prepayments

For many people, a special end of year gift can be meaningful spiritually, as we celebrate Jesus' birth. There may also be tax benefits for making your charitable contribution. Any year-end gift helps support our mission and ministry as a congregation.

In order to help our business manager, Amanda Mueller, efficiently manage church records and to comply with federal rules, please consider the following information if you make a year-end donation.

In order to claim a charitable deduction for 2023, gifts must be received or postmarked on or before December 31, 2023.

Stock gifts

If you are considering a stock donation, please make your gifts of stock by Friday, December 1 because of the time needed to process the gift. Please note, we are currently using the ELCA Foundation to process pass-thru stock gifts for us. For instructions on how to submit stock gift transactions with the ELCA Foundation, please contact Amanda Mueller, the church business manager.

2024 Prepayments

If you plan to prepay all or part of your 2024 commitment for your

regular giving offering, please write a note on the memo line "2024 prepayment."

If you would like to make a prepayment towards the Ministry Wing Fund, which is replacing the Building Fund to cover the new renovation project mortgage, this is possible. Please write a separate check from your regular giving payment and write "Ministry Wing 2024 prepayment" in the memo line. Make sure any donations are received or postmarked on or before December 31, 2023.

If you have any questions, please contact our business manager, Amanda Mueller in the church office at 608-238-7119 option 3 or bookkeeper@midvalelutheran.org. Thank you!

ELCA
GOOD
GIFTS



Consider ELCA Good Gifts this Christmas

The meaning of Christmas can get lost in our consumer-driven culture and the pressure of buying gifts that your loved ones may not really need or want. ELCA Good Gifts are a creative, meaningful way to support the ministries of the ELCA that mean the most to you and your loved ones. Popular gifts include a baby chick, a piglet, a pair of goats, or a girl's school uniform. You simply select a gift, get a card to acknowledge your gift, and change lives around the world in Jesus' name. Its easy to order or find more information online at elca.org/goodgifts.

Save the date - Annual Meeting of the Congregation February 11, 2024

The Annual Meeting will be held in the Fellowship Hall immediately following the 10:30am worship, at approximately 11:45am.

Do you leave the area in the winter?

If so, please let the church office know. Make sure you stay up -to-date with our communications by sharing your temporary address and the dates you are away. Thank you!

Thank you for your offerings

Donations to support our regular ministry and mission make a difference in the lives of many who are touched by our ministry every day. Your gifts also are an expression of your faith and an offering of thanksgiving to God. There are several ways to make a gift:

- Give now to our Regular Giving Fund online by credit or debit card or automatic deduction from checking or savings account. Visit our website or use this QR code to access our online giving page.



- Mail a check to MCLC, 4329 Tokay Blvd. Madison, WI 53711
- Use your bank's online bill pay service to send a contribution - this is usually free and you don't even pay for postage.

In our prayers remember:

† Hospitality as we welcome friends, visitors and guests.

† Health, comfort and healing for: Bill Weiss (father of Becki Fiegel), Richard LaBrie, Jeff Leeder (brother of Randi Leeder), Tonya Pankov (friend of Karen Bogenschneider), Diane Baima and Yurii Potapenko, Greg Lampe, Julie Underwood (daughter of Linda Crane), Adrian Gutierrez (grandson of Bob & Carol Ostergren), Lois Ludwig (friend of Neal Hamlett), Toni Combs (friend of Neal Hamlett), Chris Hill, Samantha Kealey (cousin of Elise Uphoff), Richard and Adelle Johnson, Acadia Bradley (friend of Enid and Frank Erdman), Sylvia Lee-Thompson (cousin of Charles Naeseth), Quentin Engelhart (son-in-law of Rebecca Hagness), Dylan Abraham, Bruce Droessler (uncle of Jennifer Austin), Mary Ann Schulte (sister of Colette Corwin), Jane Smith, Charlie, Rhoda Braunschweig, Karen Schultz, Steve Thompson (son of Anne Thompson), Harry Hinze, Walter Sopala (father of Marie Nordeng), and Valerii Bykov.

† For the safety and well-being of all who serve our community and nation as first responders, healthcare workers and military personnel, giving thanks for their dedication and courage.

Midvale Community Lutheran Church

4329 Tokay Boulevard, Madison, WI 53711

Telephone608-238-7119

Email info@midvalelutheran.org

Website midvalelutheran.org

Office Hours M-Th 8:30am-3:00pm

F 8:30am-12:30pm

Midvale Staff

Co-Pastor, Katie Baardseth: katieb@midvalelutheran.org

Co-Pastor, Blake Rohrer: blaker@midvalelutheran.org

Visitation Pastor, Ken Smith: kens@midvalelutheran.org

Director of Children's, Youth & Family Ministry, Brenda Goble: brendag@midvalelutheran.org

Office Manager, Pam Frey: info@midvalelutheran.org

Business Manager/Bookkeeper, Amanda Mueller: bookkeeper@midvalelutheran.org

Connections Coordinator, Laura Svaren: lauras@midvalelutheran.org

Director of Music Ministry, Laura Svaren: lauras@midvalelutheran.org

Adult Choir Director, Kathy Otterson: choir@midvalelutheran.org

Handbell Choir Director, Eleanor Mertenich: handbells@midvalelutheran.org

Children's Ministry Assistant, Marita Herkert-Oakland: childrensministry@midvalelutheran.org

Facilities Manager, Jay Wians: facilities@midvalelutheran.org

Communications Manager, Justina Lange: communications@midvalelutheran.org

Memorials

Connie Perkins

David and Lynnellen Myers

Roger and Helen Larson

Loraine Mael

John and Carolyn Cain

George Mael

Loraine Mael

June Matoushek

Loraine Mael

Ron Radunzel

Mary Laedtke

Ann Tofte

Loraine Mael

December Baptism Birthdays



Congratulations to our young people and their families as they celebrate the day on which God said to them, "I love you. You are mine!"

12/1	† Lincoln Morris	12/19	† Banks Webb
12/1	† Teddy Tasch	12/19	† Crew Webb
12/2	† Cole Snell	12/23	† Ellen Gesch
12/3	† Elia Meredith	12/23	† Molly Olson
12/5	† Aksel Rosenkvist	12/27	† Shawn Hoffman
12/11	† Charlie Martin	12/28	† Olivia Follmann
12/11	† Jade Sellers	12/28	† Ezekiel Henak
12/16	† Obadiah Henak	12/31	† Logan Amundrud
12/17	† Andrew Holzbauer		

Congregational Council

You can contact Church Council members directly through your online Midvale Realm account or or by contacting the church office.

President, Julie Walsh

Vice-President/President-Elect, Gene Nelson

Treasurer, Derek Matzke

Secretary, Bree McGrath

Adult Education, Emily Gnam

Building and Grounds, Hans Borchering

Social Ministry, Ben Kempinen

Evangelism and Communications, Laurie Stensland

Congregational Life, Liz Mael and Corinna Wells

Children/Youth Education, Kayla Snell & Stefany Grainger

Stewardship, Amy Bishell

Worship, Kay Bloedorn

Youth and Family Ministry, Paul Block

prayer chain

If you have a prayer request, please call Mary Lou Leslie, 849-6450.

THIS MONTH AT MIDVALE - DECEMBER 2023

Sunday	Monday	Tuesday	Wednesday	Thursday	Friday	Saturday
					1	2
<p>This schedule is tentative. For the most current schedule, visit midvalelutheran.org, select the News & Events tab.</p>					AWE Committee Sanctuary Prep 9am Al Anon 11th Step 11am	Homebound Communion Deck the Halls 9am Worship 5pm
3	4	5	6	7	8	9
Homebound Communion Worship 8 & 10:30am Worship Livestream 8am Hospitality Time 9am Adult Forum 9:15am Sunday School 9:15am	MMSD Sorters 10am Scouts 7pm Adult Ed Comm. 7pm	LWR Quilters Staff Meeting 10am Madison Ukulele 6pm Diligent Doers 6:30pm Midvale Readers 7pm Midvale Brass 7pm	Advent Bible Study Online 9am Archives 9am AA High Noon 12pm Confirmation MMSD Christmas Project 4:45pm Handbells 6:30pm	Midvale Meditation 11am Adult Choir 6:30pm	Al Anon 11th Step 11am	SS Christmas Program Rehearsal 9am Sunday School Christmas Program 5pm
10	11	12	13	14	15	16
Worship 8 & 10:30am Worship Livestream 8am Hospitality Time 9am Adult Forum 9:15am MMSD Gift Wrap Prep 9:30-11:30am Worship Hike 10:45am MMSD Gift Wrapping 11:45am-3:00pm	MMSD Gift Delivery 10:30am-12:30pm Executive Comm. 5:45pm Scouts 7pm Building/Grounds Comm. 7pm Social Ministry Comm. 7pm	Staff Meeting 10am Prayer Shawl Group 10am Madison Ukulele 6pm Midvale Brass 7pm	Advent Bible Study Online 9am Archives 9am AA High Noon 12pm Confirmation 4:45 & 7pm Handbells 6:30pm	Midvale Meditation 11am Adult Choir 6:30pm	Al Anon 11th Step 11am	MMSD Gift Delivery 2:30- 4:15pm Worship 5pm
17	18	19	20	21	22	23
Worship 8 & 10:30am Worship Livestream 8am Hospitality Time 9am Community Christmas Music Celebration 9:15am	Energy Task Force 6pm Congregational Council 7pm Scouts 7pm	LWR Quilters 9am Staff Meeting 10am Esther Circle 1pm Midvale Gathering at Attic Angel 2pm Madison Ukulele 6pm	Archives 9am AA High Noon 12pm Charity Circle 12:30pm MMSD Project 4:45-7:15pm Handbells 6:30pm	Midvale Meditation 11am Adult Choir 6:30pm	Al Anon 11th Step 11am	
24	25	26	27	28	29	30
Christmas Eve Worship 10am, 3, 4:30, 7pm Christmas Eve Worship Livestream 4:30pm	Christmas Day Worship 10am Worship Livestream 10am	Library Comm. 9am Staff Meeting 10am Madison Ukulele 6pm	Archives 9am AA High Noon 12pm Handbells 6:30pm	Midvale Meditation 11am Adult Choir 6:30pm	Al Anon 11th Step 11am	Worship 5pm
31						
Worship 8 & 10:30am Worship Livestream 8am Hospitality Time 9am						

MIDVALE COMMUNITY LUTHERAN CHURCH
4329 TOKAY BOULEVARD . MADISON . WI 53711

Dated Material

NON-PROFIT ORG.
U.S. POSTAGE
PAID
Madison, WI
Permit No. 800

Join us for Christmas worship

Christmas Eve

10:00am, 3:00, 4:30, 7:00pm

Christmas Day

10:00am



**Evangelical Lutheran
Church in America**
God's work. Our hands.



**Experience the joy of
Christmas at our special
events this December! More
information is on page 3**

