

Inside this Issue

Worship Hikes Resume 3

Adult Forum Schedule 4

Music Opportunities 6

Virtual Class on Systemic Racism 9





# Working together

by Pastor Katie Baardseth

Last week, while repairing the window blind together, I discovered that Steve- the repairperson- was a huge Beatles fan. Not only does he play guitar in a "Beatles Band", but he recalled watching their first performance on the Ed Sullivan Show on March 22, 1963. When I asked him why he thinks they are such a great band, he thought for a while and shared these words: "One of the major reasons that the Beatles were such a powerful band was the way they shared the spotlight. Not one of them was the main thing. They all took turns, and shared the roles. Not like Bruce Springsteen- he is the main thing- even in the title of his band- Bruce Springsteen and the E Street Band. Part of what makes the Beatles still unique is that they were all integral parts of the band."

What a great insight, not only into the Beatles, but especially into the life of the church. We are the body of Christ and we exist together to provide a witness to God's love in Jesus Christ! We do this all together, and we as Midvale Community Lutheran Church have done and will continue to lift up the kind of teamwork that involves everyone!

Below, a photo from Midvale's youth group is featured- Jay and Sissel processing fresh leeks for the food bank. Every semester, the group partners to sort food at Second Harvest Food Bank. Not only would I like to thank them for the wonderful hospitality, but I lift up the teamwork displayed. Teamwork like theirs is representative of what happens every week through Midvale Community Lutheran Church- at worship, at Bible Study, within the context of service such as the Porchlight meals and providing shelter to those who need it most. The teamwork that produces music at our worship that glorifies God and involves all of us in the congregational singing. The team shepherding Sunday School-teaching the powerful bible stories that will equip our children in leading us into God's future. We are a team, for the sake of Christ Jesus.

Like the Beatles, I hope that we continue to find ways to "take the lead" and share the roles in the varied ministries with which God has entrusted us. I thank you for being a part of God's team here at Midvale Community Lutheran Church and I look forward to the places God takes us- today and every day.



# PRAISE

## September worship schedule

### Labor Day Weekend, September 2-3

The worship schedule is the same as the summer worship times.

Saturday at 5:00pm and Sunday at 8:00am (also on Facebook Live) and 10:00am.

### New! Fall Worship schedule begins September 9-10

- Saturday at 5:00pm
- Sunday at 8:00am (also on Facebook Live)
- Sunday at 10:30am\*
- Sunday School and Adult Education at 9:15am

\*Note NEW worship time on Sunday morning



## September 17 worship hike at Wingra Park with Pastor Blake

Gather from 10:30-10:45am by the Wingra Boats building (enough time to join after attending Sunday School or Adult Forum at Midvale). Hike to a spring that flows all year and share in prayer and Holy Communion. All ages welcome. Regular worship will be offered in the Sanctuary at 10:30am as well.

## Rally Sunday is coming!

Have you heard the phrase "Rally the Troops!" Essentially a cry for everybody to get together for a mission, rallying is not only important in the life of a community, it's FUN! In the spirit of rallying our community together for the fall, please plan to be at Midvale on Sunday September 10. Worship times are 8am and 10:30am. Sunday School, for both children and adults, begins at 9:15-10:15am. Adult Forum at 9:15am features Midvale members, Judi and Bill Kessler, who will share about their passion for our nation's National Parks. Coffee and snacks will be served. Rally yourself and your loved ones for a special morning at Midvale!

## Midvale Worship Band

The Midvale Worship Band will be playing for 10:30am worship once a month this fall. We are bringing together familiar songs with new arrangements (think guitars and percussion!) and new contemporary and praise music to our worship time. Join the worship band on the following dates:

- Sunday, September 10th
- Sunday, October 15th
- Sunday, November 12th
- Sunday, December 3rd

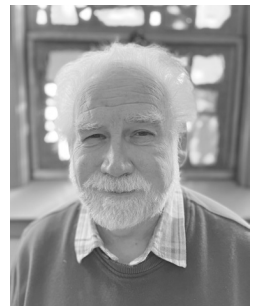
We welcome all musicians! If you are interested in joining the worship band as a musician, just for one time or every month, contact Marita Herkert-Oakland at [marita.herkert@gmail.com](mailto:marita.herkert@gmail.com).



## Celebrate Pastor Ken's 50th Ordination Anniversary!

Something really special happened at Zion Lutheran Church in Muscatine, Iowa on Sunday morning September 9, 1973! Pastor Ken Smith was ordained a pastor in the Lutheran Church! And, the Holy Spirit has been keeping him very busy serving, leading and loving the church ever since.

Thank God that Pastor Ken heard the call and has been faithfully responding for over fifty years. We believe everybody is a leader in their life as a person of faith, but for the sake of good order, the Holy Spirit calls some to be pastors. Taking time to give thanks for Pastor Ken's life and lift up his leadership among us is what Midvale loves to do! Join us as we celebrate Pastor Ken on Sunday September 24 at worship and with a special coffee hour between worships. Feel free to express your gratitude to Pastor Ken with a card and gift. A basket will be in the Gathering Space.



## Adult Education Sundays at 9:15am -Join us in the Fellowship Hall on the lower level or online on Zoom



### September 10 – Appreciation for National Parks with Bill and Judi Kessler

Midvale Members Bill and Judi Kessler

are passionate, experienced travelers, having visited all 63 U.S. National Parks, 400 of the 423 U.S. National Park Units, and 104 other countries. They have offered to share photographs and reflections on U.S. National Parks and national parks in other countries at our first Adult Forum of the new school year. We look forward to seeing you and starting a great conversation about these important, even sacred, public resources.

### September 17 – TBA



### September 24 – How Midvale Youth Are Serving Their Church and Community with Brenda Goble and the Midvale Youth

Our congregation is blessed by a vibrant, active and engaged group of

young people. On September 24, Brenda Goble along with several youth will share about their servant learning trip to Denver. Youth may also share some general reflections on their Sunday School, VBS, and Confirmation program experience. This is a great opportunity to ask, "What are the youth up to?" both here at Midvale and in their daily lives. This is sure to be a fun and interesting cross-generational opportunity!

**Zoom link** - You do not need to register to attend the Adult Forum. Reference our weekly newsletter, The Moments, for the Zoom link or contact the church office. The Zoom link will allow you to participate with video and audio using a computer or mobile device, or with audio only using a landline phone. The same link will be used for all sessions.

### Feedback Welcome!

The Adult Education Committee welcomes all thoughts, feedback and ideas for future Adult Forum programming. If you have thoughts to share, please email [adulteducation@midvalelutheran.org](mailto:adulteducation@midvalelutheran.org) or reach out to a Committee member directly.

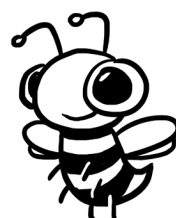
## Coffee and snacks hospitality time - sign up to host



You can sign up to help with one part, such as to make coffee, provide treats or clean-up, or sign-up for the entire morning. You can sign up online from the church website under the Connect tab and select Sunday Hospitality, or call the church office, or see the bulletin board outside the office. There are volunteer guides on the Gathering Space kitchen counter to explain the process. Feel free to sign up with a friend or have your committee or ministry team sign up for a Sunday. It's a great way to get to know other MCLC members.

## Your help is needed! Volunteer to serve in worship

Everyone in the congregation is invited to serve as a lector, greeter, communion assistant, or acolyte. Please use the link in "The Moments" weekly email newsletter or the link on our website - select the "Worship" tab and then "Serving in Worship" to sign up through the SignUpGenius page. You can read instructions for each role on the SignUpGenius page as well. You can also contact the church office at 608-238-7119 to sign up. There are open spaces from now through mid-December for you to volunteer. Check your calendars and sign up today!



## Sunday School registration is now open

Sunday School registration is open for the 2023-2024 school year. Whether you are ready to join us regularly or even once in a while, we invite you to register so we have all the info we need for your child. Our preschool program is for students who are three years old through not yet in kindergarten. Our rotation groups are for Kindergarten - sixth grade and our Confirmation group is for seventh and eighth grade students. You can learn more about our program on our website, [midvalelutheran.org/sunday-school](http://midvalelutheran.org/sunday-school).

Additionally, we are looking for a variety of leaders in our Sunday school program. You can commit to teach content on a particular Sunday with a particular age group. A leader's guide is provided and all materials are gathered for you. You can volunteer for just one Sunday or for a series of Sundays or here and there. We also need hospitality hosts to greet while sitting at a desk, and a Pink Group host to welcome families with infants and toddlers. All volunteers in our children's ministry must consent to a background check. Please email [brendag@midvalelutheran.org](mailto:brendag@midvalelutheran.org) or call: 608-238-7119 to discuss.



MIDVALE COMMUNITY LUTHERAN CHURCH IS A COMMUNITY OF BELIEVERS IN JESUS CHRIST, CALLED BY THE HOLY SPIRIT TO PRAISE, LIVE AND SHARE GOD'S LOVE.

# LIVE



## NAMI - Dane Walk, October 7

Dear Friends,

Since 2010, many of you individually, as well as the church through the portion of regular offerings allocated by the Social Ministry Committee, have generously supported the NAMI Walk fundraiser. Many people are suffering in our country in different ways. One issue that many more people are now facing is a surge in mental health/mental illnesses like never before.

With all of the stressors of the COVID pandemic and other social issues, people dealing with mental health/mental illness issues need our wholehearted support. One organization that has stepped up these past four plus decades is NAMI-Dane County. Once again, NAMI-Dane County is having the annual walk this year at the end of Mental Illness Awareness Week on Saturday, October 7 at Olin Park. Midvale has stepped up in the past to support the work of NAMI-Dane; so, I am once again asking for support for those with mental illness. I appreciate any help you can give. Checks can be made out to NAMIDane County and mailed to Midvale Community Lutheran Church, c/o Dylan's Walk-Team Midvale, 4329 Tokay Blvd., Madison, WI 53711 or left in the church office.

Thank you again for your continued support.

- Dylan Abraham

## Candle lighting for mental illness awareness September 30 - October 1

In worship, we will light a candle and include special prayers for mental health. Approximately one in four adults in the U.S. experience some kind of mental health disorder in a given year. Nearly all of us are impacted, either directly or through someone we know. The National Alliance on Mental Illness (NAMI) was founded in Dane County and initially met at Midvale Community Lutheran Church, led by several of our congregation's members. NAMI is an important resource of education, support and advocacy for all impacted by mental illness. Visit their website at [www.namidanecounty.org](http://www.namidanecounty.org)

## Confirmation Ministry Begins

Confirmation ministry for our 7th and 8th grade youth began with a retreat at Bethel-Horizons Camp in August. It was a great opportunity to build relationships among the confirmation students. The retreat centered the upcoming year in God's love for each person and helped us celebrate the gifts everyone brings to our community.

Orientation for confirmation youth and parents will occur in early-to-mid September and sessions will be offered on Wednesdays. If you have a child in 7th or 8th grade and have questions or don't receive the orientation information, please contact Brenda or one of the pastors.

## Sunday School starts on Sunday, September 10th at 9:15 am

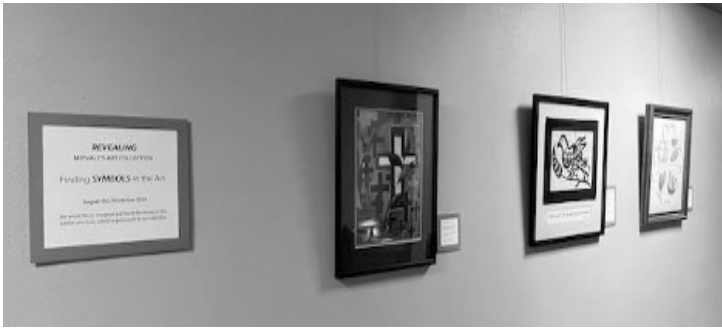
We are so excited to welcome back our children and families to another year of Sunday school where we explore what it means to live out and grow in your faith.

Sunday School runs weekly during the school year. Programming is offered for children, birth through 8th grade.

- Parent-child time is offered for babies and toddlers. We call that group our Pink Group
- Preschoolers (age 3 -5) are part of our Purple group, and learn a new story each week.
- Kindergarten through 6th graders (Yellow, Orange, and Red Groups) spend 3-4 weeks on a story, and explore the story through different rotations, or activities.
- 7th and 8th graders are part of our Blue Group, or our Confirmation program.

We need dozens of adult and high school age volunteers throughout the year to run this program. If you are interested in volunteering, let us know!

You can register on the Midvale website, under the Grow tab or contact Brenda Goble at [brendag@midvalelutheran.org](mailto:brendag@midvalelutheran.org)

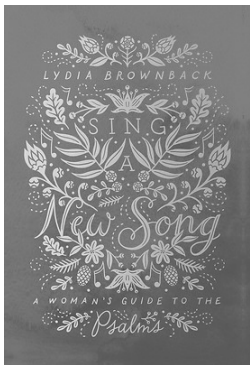


## Revealing Midvale's Art Collection

### Finding symbols in the art

The Art Team would like to share some of the hidden works in the Midvale Art Collection. We are highlighting seven works whose connection might be the general title of "symbols." As we feature artwork, we also recognize and thank the donors who have added so generously to our collection. As Midvale's collection continues to expand, we look to ways to grow the collection. We grow through donations that fit the religious themes of our collection, acquisitions of new art, and commissioned artworks. Please consider helping Midvale continue to grow its art collection. Contact Jean Sandrock (sandrock@charter.net) to discuss possibilities.

This exhibit includes a donation from Jan Anderzon and Jo Conger. It is a print of a tapestry from a Catholic Church in Charlottesville, VA, titled THE INCARNATION JOURNEY. Another work is a donation from Mark and Toni Swandby (print by Lutheran Brotherhood Insurance) telling the story of the Reformation through photos, maps, description and work of Martin Luther. You can find pictures of these art pieces on the back page of this newsletter. Enjoy viewing the seven works included in this exhibit down the Main Hall of Midvale from August thru November.



## Charity Circle meetings - please join us!

The Charity Circle will be meeting again for the new year, beginning September 20, 12:30pm, in the main floor meeting room. This Circle provides an opportunity to make friends, get to know and support each other, socialize and learn.

We will be studying the Psalms with the use of our Bibles and a book called *Sing a New Song* by Lydia Brownback, a source to help us better understand the Psalms. We would love to have you join us. If you would like more information, please call Mary Lou Leslie (608-849-6450) or Rebecca Hagness (608-298-7389).

## Handbell Choir resumes Wednesday Sept 6th and new ringers welcome!

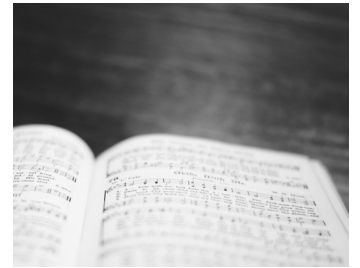


The Handbell Choir will resume regular rehearsals on Wednesday evenings, starting Wednesday, September 6th, 6:30-7:45pm. The handbells generally ring once a month for worship. New ringers are always welcome! There is room for regular ringers as well as substitute ringers. The repertoire allows for anything from a small group of four to a whole choir of ringers, and it's never too late to learn!

Interested? Want to learn more? Contact Midvale's Handbell Choir director, Eleanor Mertenich, at [handbells@midvalelutheran.org](mailto:handbells@midvalelutheran.org).

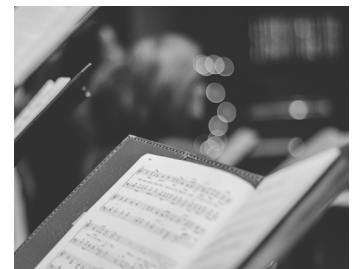
## Hymn-sing Sunday, October 22, 9:15-9:45am

Mark your calendars! You're invited to attend a Hymn-sing between services at 9:15-9:45am on Sunday, October 22, during Midvale's Season of Creation. The ELW hymnal includes many beautiful hymns about harvest and God's creation. Which are your favorites? Requests will be taken for all types of hymns.



## Come sing with the Choir!

Fall rehearsals begin on Thursday, September 7th in the Sanctuary, 6:30-7:45pm. Longtime choir member, returning member, or new member? Can't wait to see you! Interested, but not sure about choir? Come and see what it's all about! All voices welcome!



## You are invited to join the Esther Circle Bible study

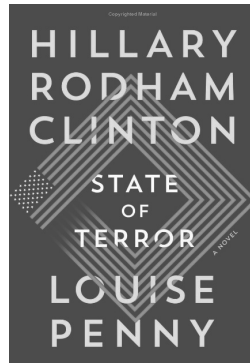
Esther Circle meets the 3rd Tuesday of month at 1pm from September through May. The next meeting will be September 21st at 1pm in the main level meeting room. We use the Gather magazine Bible study. If you are interested, or have any questions, please contact Karen Mandt at [karenmandt@gmail.com](mailto:karenmandt@gmail.com).

# SHARE

## Midvale Readers Book Club resumes Sept 26

The Midvale Readers Book Club meets monthly for a lively book discussion. We read a variety of genres, including both fiction and non-fiction. After taking the summer off, discussions will resume in September.

Join us on Tuesday, Sep 26, 2023 at 7pm in the church library for a discussion of State of Terror by Louise Penny and Hillary Clinton. Plenty of copies are available at the Madison Public Library. Large print and audiobooks are also available.



SAVE THE DATE

MIDVALE  
WOMEN'S  
RETREAT AT  
BETHEL  
HORIZONS

APRIL 26 - 28

More information to  
come in January



## Consider joining the Prayer Shawl Ministry!

The prayer shawl ministry could be your fit! We resumed last year as the pandemic was winding down. We created hats and scarfs which were donated. Our shawl supply multiplied. In June, we celebrated and blessed shawls at all three worship services. The shawls were made available to all. We were encouraged by the

congregation's favorable response to our efforts. It was a great day!

Please join us! When using your knitting and crocheting skills:

1. Creating a hat or scarf gives a person added warmth to their exposed head and neck on the coldest days of winter. They are delivered to schools and local community organizations.
2. Making a prayer shawl invites you to leave behind the concerns of your everyday life and create, with knitting needles or crochet hook, a work of art that will provide comfort to those who are dealing with loneliness, depression, ending a relationship, giving birth, establishing relationships, grieving a loss, a medical procedure, etc.

**Prayer shawl ministry season begins on Tuesday, September 12 from 10:00 - 11:30am.** We meet every second Tuesday, September thru June in Room 244. Our current members have many years of knitting and crocheting experience and can provide project support, if needed.

For more information about our history and patterns:

1. Go to [www.midvalelutheran.org](http://www.midvalelutheran.org), select the Connect tab.
2. Go to [www.shawlministry.com](http://www.shawlministry.com).
3. Use Pinterest to access patterns for hats, scarfs or shawls. Use the search option for prayer shawls.

Your donation of acrylic yarn is always welcome. Cash or check is always welcome. Come and share God's love through our handmade creations.

## Life Forever

by Dylan Abraham

*Jesus died on the cross  
So that we may live forever,  
Brothers and sisters hand in hand  
Sharing God's love together.*

*He was born in a manger  
And grew into a man,  
To forgive us our sins  
As only He can.*

*The crowds were amazed  
Of the miracles He did,  
He was always for them  
and never hid.*

*He taught His disciples  
The way to be,  
To open their eyes  
So they could see.*

*He is now in heaven  
And, He will come again,  
We await His return  
But, no one knows when.*



# MCLC Endowment Fund

## Application Deadline

- Do you have a unique passion or interest that you feel can enhance the ministry of MCLC?
- Is there a gap in the service that MCLC is currently providing to our members, the community or global mission?
- Are there improvements in our physical building or equipment that could better meet members' needs and broaden MCLC's mission?

### Consider submitting a grant request to the MCLC Endowment Fund

#### These three general areas guide the purpose of the Endowment Fund:

*Ministry:* visiting theologians, local and world mission support, health/healing ministry, congregational anniversary remembrances, campus ministry

*Education:* scholarships for academic or continuing education in religious studies, sponsorship of workshops/seminars or study programs, sponsorship of experiences that encourage personal growth in religion, sponsorship of a seminary chair

*Facilities:* special building projects and equipment purchases

**Submitting a grant request:** Although most grant requests are submitted through a church committee, some past grant requests have been submitted by individuals. If you are interested in submitting a grant request and are not sure whether it should be approved by a church committee, feel free to reach out to one of the pastors or other members of the Endowment committee with your questions.

**Grant requests can be submitted to Pam Frey in the church office or by email to [info@midvalelutheran.org](mailto:info@midvalelutheran.org). Application forms are available through the church office.**

**The Endowment Committee welcomes grant requests through October 15, 2023.**

#### Who should I contact with additional questions or if I want to make a gift to the Endowment Fund?

Please contact the church office at 608-238-7119 or [info@midvalelutheran.org](mailto:info@midvalelutheran.org), or speak with one of the pastors or members of the Endowment Committee; Current members of the Endowment Committee are: Derek Matzke, Susan Knowles, Anne Wuethrich, Stephanie Whalley, Betsy Popelka Massnick, Randy Snell and Marty Harrison.

# Prayer Chain

The Prayer Chain is a small group of Midvale members that prays for any request made. Requests can be made through the church office (which are then sent on to the lead person) or directly to the lead person either by phone or email using the contact information at the end of this article. The prayers requested through this group are confidential and are not necessarily for the individuals who are mentioned in the weekly altar prayers. Requests can be as personal as you'd like them to be - it is helpful to give a specific request (comfort and healing, prayers of thanks, God's Will, etc.).



To request prayer or to join the Prayer Chain, contact Mary Lou Leslie, 608-849-6450 or [lulu\\_leslie@yahoo.com](mailto:lulu_leslie@yahoo.com) to be added to the list.

## September Baptism Birthdays



***Congratulations to our young people and their families as they celebrate the day on which God said to them, "I love you. You are mine!"***

- |      |                   |      |                   |
|------|-------------------|------|-------------------|
| 9/5  | † Darren Linder   | 9/16 | † Grace Hollander |
| 9/7  | † Johanna Carlson | 9/18 | † Ansel Grupe     |
| 9/8  | † Ezekiel Beach   | 9/21 | † William Martin  |
| 9/11 | † Laiken Sanchez  | 9/22 | † Liv Krueger     |
| 9/16 | † Milo Follmann   | 9/30 | † Beau Nackers    |

## Thank you for your offerings

Donations to support our regular ministry and mission make a difference in the lives of many who are touched by our ministry every day. Your gifts also are an expression of your faith and an offering of thanksgiving to God. There are several ways to make a gift:

- Give now to our Regular Giving Fund online by credit or debit card or automatic deduction from checking or savings account. Visit our website or use this QR code to access our online giving page.



- Mail a check to MCLC, 4329 Tokay Blvd. Madison, WI 53711
- Use your bank's online bill pay service to send a contribution - this is usually free and you don't even pay for postage.

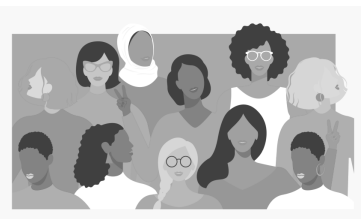


## *In our prayers remember:*

† Hospitality as we welcome friends, visitors and guests.

† Health, comfort and healing for: Bill Weiss (father of Becki Fiegel), Richard LaBrie, Jeff Leeder (brother of Randi Leeder), Tonya Pankov (friend of Karen Bogenschneider), Diane Baima and Yurii Potapenko, Greg Lampe, Julie Underwood (daughter of Linda Crane), Adrian Gutierrez (grandson of Bob & Carol Ostergren), Lois Ludwig (friend of Neal Hamlett), Toni Combs (friend of Neal Hamlett), Chris Hill, Samantha Kealey (cousin of Elise Uphoff), Richard and Adelle Johnson, Robert Zimmerman, Cleo Loftsgordon, Acadia Bradley (friend of Enid and Frank Erdman), Gordon Thomson (brother-in-law of Eric James and Gary Hein), Sylvia Lee-Thompson (cousin of Charles Naeseth), Quentin Engelhart (son-in-law of Rebecca Hagness), Dale Klemme (friend of Joe Irvin and Suzy Tegge), Lois Kammer, Bruce Droessler (uncle of Jennifer Austin) and Julie Strong.

† For the safety and well-being of all who serve our community and nation as first responders, healthcare workers and military personnel, giving thanks for their dedication and courage.



## **Invitation to participate in a virtual class on systemic racism**

Midvale Community Lutheran Church members are invited to participate in a free virtual class to explore the Evolution of Systemic Racism. The class will be co-taught by Dr. Leanne Puglielli and Midvale member Ben Kempinen on eight successive Tuesday evenings from 6:30pm until 8:30pm, beginning on September 14, 2023 and continuing through November 14, 2023.

More information about the class and how to sign up can be found here. There are also brochures with additional information in the Welcoming Space at church.

Leanne has taught this course for several years and Ben has joined her for the past two sessions. The topics complement prior Midvale programs and groups, including the Now is the Time class in the spring of 2022, the work of Midvale's Racial Justice Group and our membership in the Wisconsin Interfaith Voter Engagement Initiative and WISDOM.

For additional information feel free to contact Ben Kempinen at (608) 335-7362 or at ben.kempinen@gmail.com.

## **Midvale Community Lutheran Church**

4329 Tokay Boulevard, Madison, WI 53711

**Telephone** .....608-238-7119

**Email** ..... info@midvalelutheran.org

**Website** ..... midvalelutheran.org

**Office Hours** ..... M-Th 8:30am-3:00pm

F 8:30am-12:30pm

## **Midvale Staff**

**Co-Pastor**, Katie Baardseth: katieb@midvalelutheran.org

**Co-Pastor**, Blake Rohrer: blaker@midvalelutheran.org

**Visitation Pastor**, Ken Smith: kens@midvalelutheran.org

**Director of Children's, Youth & Family Ministry**, Brenda Goble: brendag@midvalelutheran.org

**Office Manager**, Pam Frey: info@midvalelutheran.org

**Business Manager/Bookkeeper**, Amanda Mueller: bookkeeper@midvalelutheran.org

**Connections Coordinator**, Laura Svaren: lauras@midvalelutheran.org

**Director of Music Ministry**, Laura Svaren: lauras@midvalelutheran.org

**Adult Choir Director**, Kathy Otterson: choir@midvalelutheran.org

**Handbell Choir Director**, Eleanor Mertenich: handbells@midvalelutheran.org

**Children's Ministry Assistant**, Marita Herkert-Oakland: childrensministry@midvalelutheran.org

**Facilities Manager**, Jay Wians: facilities@midvalelutheran.org

**Communications Manager**, Justina Lange: communications@midvalelutheran.org

## **Congregational Council**

*You can contact Church Council members directly through your online Midvale Realm account or or by contacting the church office.*

**President**, Julie Walsh

**Vice-President/President-Elect**, Gene Nelson

**Treasurer**, Derek Matzke

**Secretary**, Bree McGrath

**Adult Education**, Emily Gnam

**Building and Grounds**, Hans Borcherding

**Social Ministry**, Ben Kempinen

**Evangelism and Communications**, Laurie Stensland

**Congregational Life**, Liz Mael and Corinna Wells

**Children/Youth Education**, Kayla Snell & Stefany Grainger

**Stewardship**, Amy Bishell

**Worship**, Kay Bloedorn

**Youth and Family Ministry**, Paul Block

*prayer chain*

*If you have a prayer request, please call  
Mary Lou Leslie, 849-6450.*

# THIS MONTH AT MIDVALE - SEPTEMBER 2023

Sunday	Monday	Tuesday	Wednesday	Thursday	Friday	Saturday
<p><b>This schedule is tentative. For the most current schedule, visit <a href="http://midvalelutheran.org">midvalelutheran.org</a>, select the News tab.</b></p>					1	2
					Garden Team 9:30am AI Anon 11th Step 11am	Homebound Communion Worship 5pm
3		5	6	7	8	9
Homebound Communion Worship 8 & 10am Worship Livestream 8am Hospitality Time 9am	Labor Day Office & building closed	LWR Quilters 9am Staff Meeting 10am LWR Packing 10am Madison Ukulele 6pm Diligent Doers 6:30pm Worship Band Jam 6:30pm Brass Ensemble 8pm	Archives 9am Care Team 9am AA High Noon 12pm Handbell Choir 6:30pm 7th Grade Confirmation Orientation 7pm	Adult Bible School Retreat at Holy Wisdom 9am Midvale Meditation 11am Confirmation Mentor Orientation 5:45pm Adult Choir 6:30pm 8th Grade Confirmation Intro 6:45pm	Garden Team 9:30am AI Anon 11th Step 11am	Worship 5pm
10	11	12	13	14	15	16
Rally Sunday Worship 8 & 10:30am Worship Livestream 8am Hospitality time 9am Adult Forum 9:15am Sunday School 9:15am Child & Youth Ed Meeting 11:30am	Executive Comm. 5:45pm Building/Grounds Comm. 7pm Social Ministry Comm. 7pm Scouts 7pm	Prayer Shawl Group 9am Staff Meeting 10am Navajo Weavers 1pm Madison Ukulele 6:30pm Brass Ensemble 8pm	Archives 9am AA High Noon 12pm Handbell Choir 6:30pm	Midvale Meditation 11am Adult Choir 6:30pm	Garden Team 9:30am AI Anon 11th Step 11am	LWR Quilts Shipping 10am Worship 5pm
17	18	19	20	21	22	23
Worship 8 & 10:30am Worship Livestream 8am Hospitality time 9am Adult Forum 9:15am Sunday School 9:15am Maeve Kirwin Baptism 10:30am Worship Hike 10:45am	Energy Task Force 6pm Congregational Council 7pm Scouts 7pm	LWR Quilters 9am Staff Meeting 10am Navajo Weavers 1pm Madison Ukulele 6:30pm Brass Ensemble 8pm	Archives 9am AA High Noon 12pm Charity Circle 12:30pm Handbell Choir 6:30pm	Midvale Meditation 11am Adult Choir 6:30pm	Garden Team 9:30am AI Anon 11th Step 11am T. Dean 1pm	Worship 5pm
24	25	26	27	28	29	30
Worship 8 & 10:30am Worship Livestream 8am Hospitality time 9am Adult Forum 9:15am Sunday School 9:15am	9th Grade Student & Mentor Meeting 6pm Worship Band Jam 6:30pm Scouts 7pm	Library Committee 9am Staff Meeting 10am Navajo Weavers 1pm Madison Ukulele 6:30pm Midvale Readers 7pm Brass Ensemble 8pm	Archives 9am AA High Noon 12pm Handbell Choir 6:30pm	Midvale Meditation 11am Adult Choir 6:30pm	Garden Team 9:30am AI Anon 11th Step 11am	Worship 5pm

MIDVALE COMMUNITY LUTHERAN CHURCH  
4329 TOKAY BOULEVARD . MADISON . WI 53711

Dated Material

*all are welcome!*

New worship schedule

Saturday at 5:00pm

Sunday at 8:00am (also on  
Facebook Live)

Adult Forum & Sunday School  
9:15am

Sunday at 10:30am



Evangelical Lutheran  
Church in America  
God's work. Our hands.



NON-PROFIT ORG.  
U.S. POSTAGE  
**PAID**  
Madison, WI  
Permit No. 800

These two pieces of artwork are on display in Midvale's *Finding symbols in the art* exhibit, now on display in the Main Hall. Read more about the exhibit on page 6.

